



The Realization of StreetLight Control's Capabilities

Designed with municipalities and utilities in mind, StreetLight Control offers many features.

 Metering	 GPS – Asset Management	 Security	 Plug&Play Commissioning
 Software User Friendly	 Control – Photocell – Schedule – User Command	 TALQ Interoperable System	 OTA Over The Air Upgrade



Create The Intelligent City You Want

LED Fixtures



Upgradeable fixtures with LEDs deliver 50-70% energy savings and are a gateway to city-changing technology.

StreetLight Control



StreetLight Control helps to remotely control lighting costs by letting city managers control metering, maintenance and lighting output.

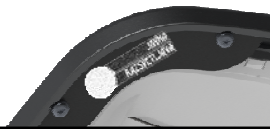
Intelligent LED Fixtures



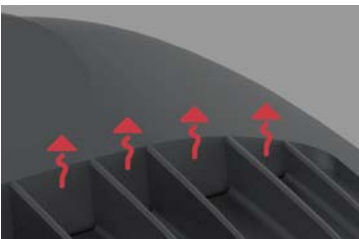
All our LED fixtures can be upgraded with data-collecting sensors, creating an aesthetically pleasing light that accesses real-time reactive and predictive information.



Customization options



Airgaps



The airgaps

- allow airflow in the middle of the luminaire, thus achieving a better thermal control
- also prevent the accumulation of water or dust on top of the luminaire.





Inlumino technical specifications (S-M-L size)

Performance: 20-300W & up to 40 klm	Efficiency: Up to 149 lm/W
Protection: IP66 & IK09	Weight: 7-9-12.5 kg
Color temp.: 3000 K, 4000 K, 5000 K	Temperature range: -40 to +50 °C
Mounting: Universal coupler 30-76 mm	Class I, Class II, Fuse
DALI, DynaDim, CLO	7pin NEMA socket, ZHAGA socket

49 variations of optics (lens)

L90B50 > 125,000 Hours


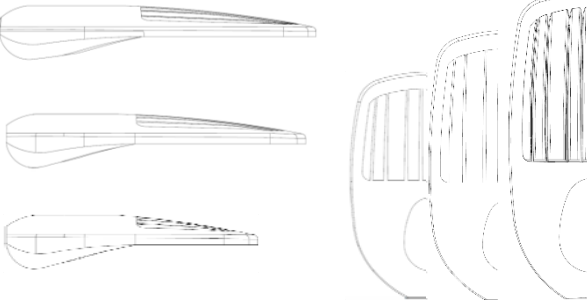


Size comparison


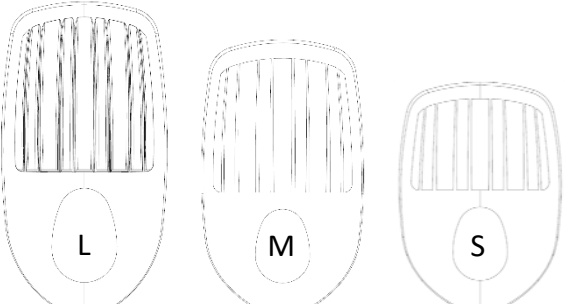
L

M

S



Size comparison



Size & performance

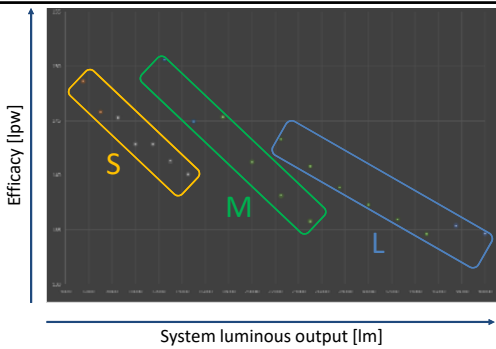
Size	Description example	Lumen range [lm]	Efficacy range [lpw]	Power range [W]
S	INS1-3000AAA730-ENOD-C1PC48-R7021	2700-5500	142-138	19-40
	INS1-5000AAA730-ENOD-C1PC48-R7021	5500-10000	148-141	37-71
	INS1-10000AAA730-ENOD-C1PC48-R7021	10000-14500	142-139	70-104
	INS1-15000AAA730-ENOD-C1PC48-R7021	14500-17500	139-131	104-133
M	INM1-12000AAA730-ENOD-C1PC48-R7021	12500-17500	149-141	85-124
	INM1-18000AAA730-ENOD-C1PC48-R7022	17500-25000	147-137	119-182
	INL1-22000AAA730-ENOD-C1PC48-R7021	22500-35000	143-134	157-260
L	INL1-40000AAA730-ENOD-C1PC48-R7021	35000-40000	136-133	257-300

Performances intentionally overlap between sizes allowing customers to choose between cost and efficacy.

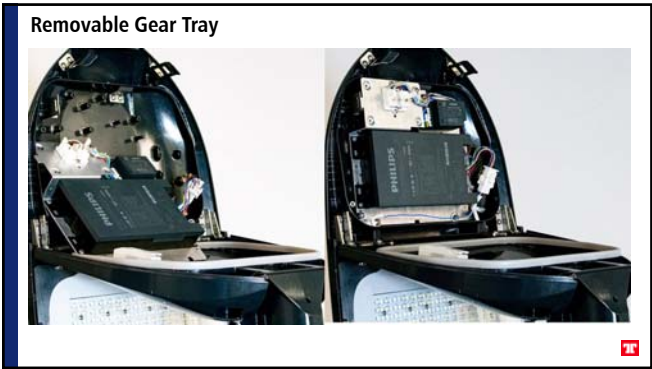
(Next slide contains a visual representation of this overlap.)

Eg. The lighting design requires a 17500lm luminaire

Option A Size S 133W 131LPW
17500lm
Option B Size M 124W 141LPW







Installation of a typical 200nos. of fixtures

Avg. time of fixture change on a column – 15 to 25mins

Electrician's work timings	8 hrs
Avg. Time taken to install 1 fixture	20 min
No. of fixtures installed in 1 hr	3 nos.
No. of fixtures installed in 1 day	3 x 7hrs = 21 fixtures
Time taken to install 200 fixtures	200/21 = 10 days
Hourly wages of an electrician in Spain	€11
Total wages of 1 electrician for 10days	10 x 8 x 11 = €880
Wages for 4 electrician	€880 x 4 = €3520

Installation of 200nos. of Inlumino fixtures

Avg. time of Inlumino fixture installation on a column – 5 to 8 mins

Electrician's work timings	8 hrs
Avg. Time taken to install 1 fixture	10 min
No. of fixtures installed in 1 hr	6 nos.
No. of fixtures installed in 1 day	6 x 7hrs = 42 fixtures
Time taken to install 200 fixtures	200/42 = 5 days
Hourly wages of an electrician in Spain	€11
Total wages of 1 electrician for 5days	5 x 8 x 11 = €440
Wages for 4 electrician	€440 x 4 = €1760
Savings on wages %	(3520-1760)/3520 = 50%
Wages of 3 electricians (easy installation of Inlumino)	€440 x 3 = €1320
Savings on wages %	(3520-1320)/3520 = 62.5%



Benefits of Inlumino

Toolless Installation – Click , Flip, Twist, Unlock

Light Weight – Easy Installation

Disconnect – Maintenance Safety

High Lumen Package

Easy to update physically with low additional investment

Cost saving due to high lumen maintenance

Cost saving due to energy conservation

Cost saving due to low and easy maintenance

Cost saving due to reduced labour cost.

